



LW5505



knitting

Designed by Linda S. Smith

What you will need:

RED HEART® Super Saver® Jumbo: 3 skeins 530 Orchid

Or

RED HEART® Super Saver®: 6 skeins 530 Orchid

BUY YARN



RED HEART® Super Saver® Jumbo, Art. E302

available in solid color 14 oz, (396 g), 744 yd (681 m) and 10 oz multicolor (283 g), 482 yd (440 m) skeins

Or

BUY YARN



RED HEART® Super Saver®, Art. E300 available in

solid color 7 oz (198 g), 364 yds (333 m); prints, multis and heathers 5 oz (141 g), 236 yds (215 m); flecks 5 oz (141 g), 260 yds (238 m) skeins



Exquisite Cabled Throw

Add a throw in a fresh color to your favorite relaxing spot. The classic knit cable pattern will never go out of style and is so comfy to wrap up with. This throw is perfect to give as a bridal or anniversary gift.

What you will need (continued):

Susan Bates® Knitting Needles: 5.5mm [US 9] 36" circular needle

Cable needle, yarn needle

GAUGE: 15 sts = 4" [10 cm]; 28 rows = 4" [10 cm] in Garter stitch (knit every row). CHECK YOUR GAUGE. Use any size needles to obtain the gauge. Throw measures 42 x 64" [106.5 x 162.5 cm].

Throw measures 42 x 64" [106.5 x 162.5 cm].

SPECIAL STITCH

2/2 RC (2 over 2 Right Cross) = Slip next 2 stitches to cable needle and hold in back, k2, then k2 from cable needle.

NOTES

- 1. Throw is worked in a cable pattern with Garter stitch borders.
2. Circular needle is used to accommodate large number of stitches. Work back and forth on circular needle as if working with straight needles.
3. The body of the throw can be worked by following the written instructions or reading the chart. Read right side rows from right to left and wrong side rows from left to right.

THROW

Cast on 164 sts. Lower Border Work in Garter stitch (knit every row) for 14 rows.

Body

Row 1 (wrong side): K12 (for side border), p4, \*k4, p4; repeat from \* to last 12 sts, k12 (for side border).

Row 2 (right side): Knit.

Row 3: K12, p4, \*k4, p4; repeat from \* to last 12 sts, k12.

Rows 4-7: Repeat Rows 2 and 3 twice.

Row 8 (cable row): K12, 2/2 RC, \*k4, 2/2 RC; repeat from \* to last 12 sts, k12.

Repeat Rows 1-8 until piece measures about 62" [157.5 cm] from beginning.

Top Border

Work in Garter stitch for 14 rows. Bind off loosely.

FINISHING

Weave in ends.

ABBREVIATIONS

k = knit; p = purl; st(s) = stitch(es).

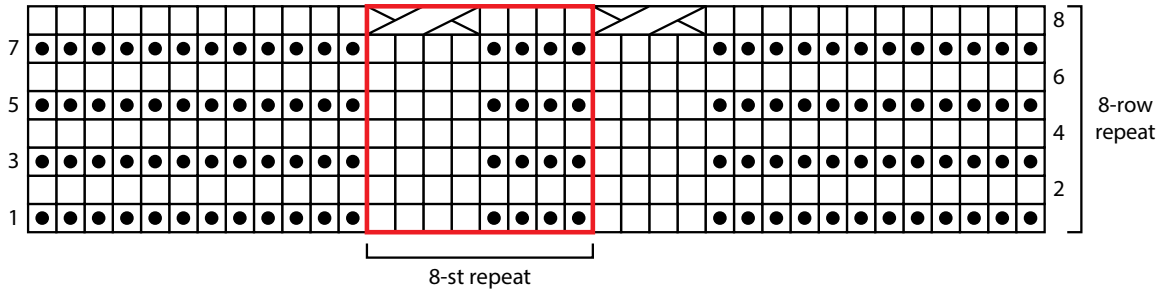
See next page for chart and alternate photo



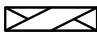
2015 & 2016 WOMEN'S CHOICE AWARD AMERICA'S MOST RECOMMENDED YARN BRAND



# LW5505 Exquisite Cabled Throw



Key

- knit on RS, purl on WS
- purl on RS, knit on WS
-  2/2 RC (2 over 2 right cross)

